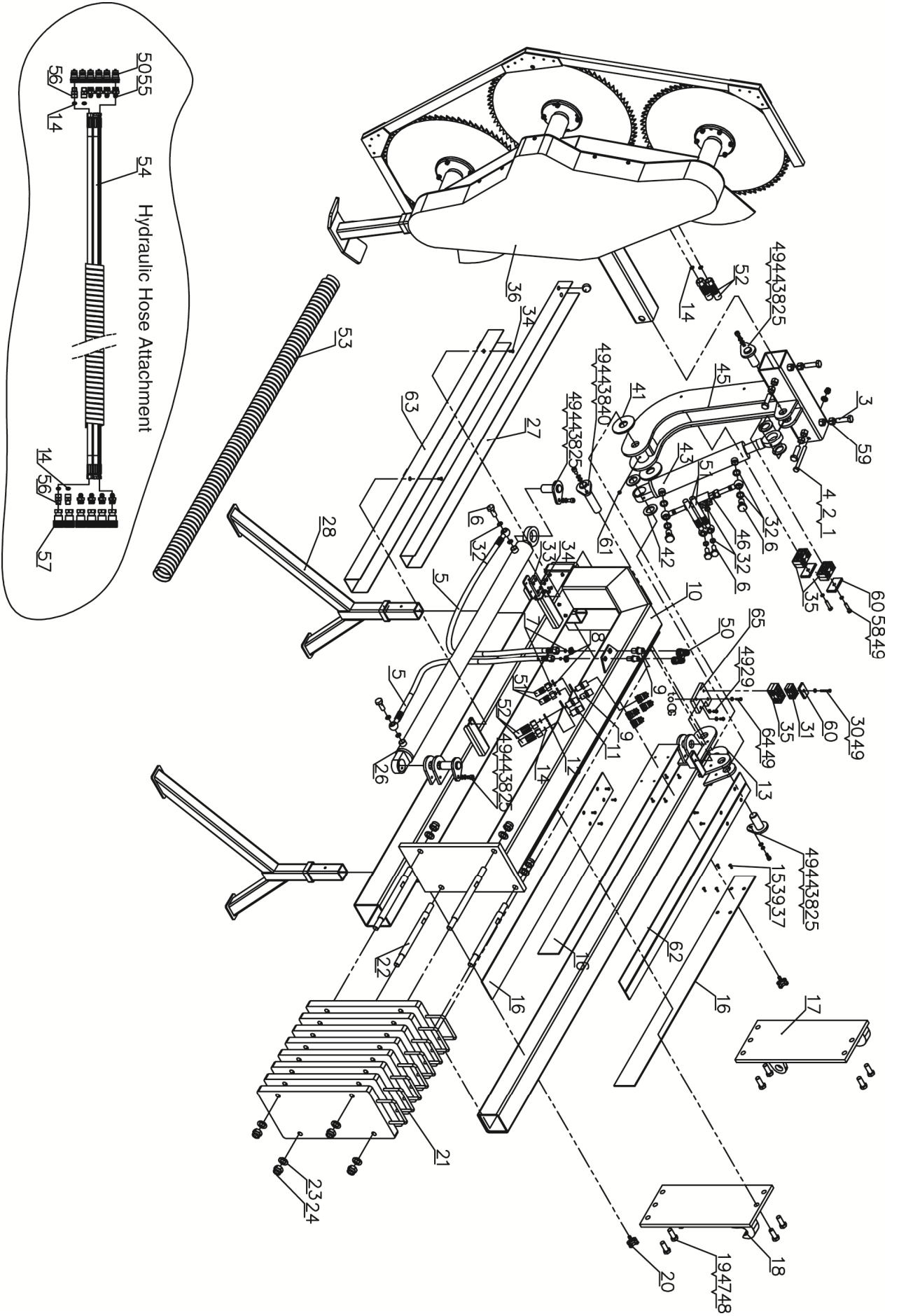


Parts Drawing & Parts List



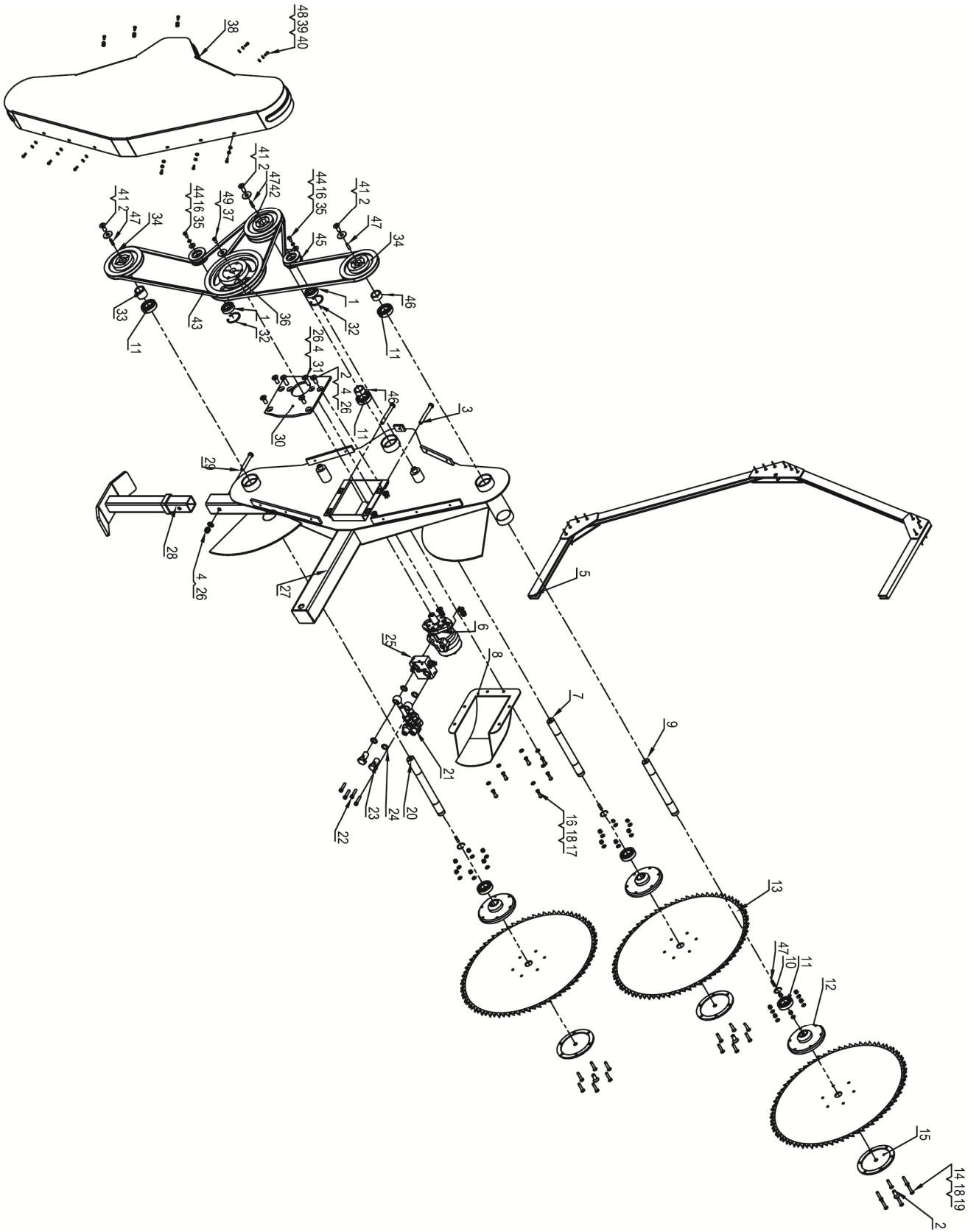
Parts Drawing & Parts List

| Ref# | Drawing No. | Description | Qty |
|------|------------------|------------------------|-----|
| 1 | 9206-12000-DX | Nylon Lock Nut M12 | 1 |
| 2 | 9301-12000-DX | Flat Washer Ø12 | 1 |
| 3 | 9101-16055-DX8.8 | Hex Bolt M16x55 | 4 |
| 4 | 9101-12120-DX8.8 | Hex Bolt M12x120 | 1 |
| 5 | NJ600-00007 | Short Hydraulic Hose | 2 |
| 6 | LSH22-00005-DX | Bolt Connector | 6 |
| 7 | 9901-8x2.5 | O Ring Ø8x2.5 | 4 |
| 8 | GB/T6173 | Hex Thin Nut M18x1.5 | 4 |
| 9 | NJ600-00005 | Connector | 4 |
| 10 | NJ600-01000 | Beam | 1 |
| 11 | NJ600-00006 | Connector | 2 |
| 12 | GB/T6173 | Hex Thin Nut M22x1.5 | 2 |
| 13 | NJ600-02000 | Move Tube | 1 |
| 14 | 9901-11.2x2.4 | O Ring Ø11.2x2.4 | 8 |
| 15 | 9103-05016-DX8.8 | Screw M5x16 | 14 |
| 16 | NJ600-00002 | Nylon Plate | 3 |
| 17 | NJ600-04000 | Panel (Right) | 1 |
| 18 | NJ600-11000 | Panel (Left) | 1 |
| 19 | 9101-16045-DX8.8 | Hex Bolt M16x45 | 10 |
| 20 | T251-60000 | Handle Wheel | 2 |
| 21 | NJ600-15000 | Clump Weight | 8 |
| 22 | NJ600-00004 | Screw | 4 |
| 23 | 9301-20000-DX | Flat Washer Ø20 | 8 |
| 24 | 9206-20000-DX | Nylon Lock Nut M20 | 8 |
| 25 | NJ600-09000 | Hinge Pin | 4 |
| 26 | NJ600-17000 | Cylinder for Move Tube | 1 |
| 27 | NJ600-00001 | Hydraulic Hose Cover | 1 |
| 28 | NJ600-06000 | Support Leg | 2 |
| 29 | 9104-08020-DX8.8 | Screw M8x20 | 2 |
| 30 | 9101-08090-DX8.8 | Hex Bolt M8x90 | 1 |
| 31 | NJ600-12000 | Pipe Clamp 1 | 1 |
| 32 | 9905-14000 | Combined Washer | 12 |
| 33 | NJ600-00003 | Rubber Pad | 1 |
| 34 | 9103-06016-DX8.8 | Screw M6x16 | 6 |
| 35 | NJ600-13000 | Pipe Clamp 2 | 3 |

Parts Drawing & Parts List

| Ref# | Drawing No. | Description | Qty |
|------|------------------|----------------------------------|-----|
| 36 | NJ600-05000 | Saw Blade | 1 |
| 37 | 9206-05000-DX | Nylon Lock Nut M5 | 14 |
| 38 | 9105-08020-DX8.8 | Screw M8x20 | 5 |
| 39 | 9301-05000-DX | Flat Washer \varnothing 5 | 14 |
| 40 | NJ600-10000 | Long Hinge Pin | 1 |
| 41 | 9302-30000-DX | Big Flat Washer \varnothing 30 | 2 |
| 42 | 9301-30000-DX | Flat Washer \varnothing 30 | 4 |
| 43 | NJ600-08000 | Lift Cylinder | 1 |
| 44 | 9301-08000-DX | Flat Washer \varnothing 8 | 5 |
| 45 | NJ600-03000 | Movable Arm | 1 |
| 46 | NJ600-14000 | Control Valve | 1 |
| 47 | 9301-16000-DX | Flat Washer \varnothing 16 | 10 |
| 48 | 9206-16000-DX | Nylon Lock Nut M16 | 10 |
| 49 | 9306-08000-DX | Lock Washer \varnothing 8 | 11 |
| 50 | N801-00005 | Quick Coupling (Inscribed) | 12 |
| 51 | NJ600-00009 | Hydraulic Hose A | 2 |
| 52 | NJ600-00012 | Hydraulic Hose B | 2 |
| 53 | NJ600-00013 | Short Hydraulic Hose Cover | 1 |
| 54 | NJ600-16000 | Tubing Bundles Components | 1 |
| 55 | N920-00010 | Connector z1/2-M14x1.5 | 8 |
| 56 | LSH22-08001-DX | Connector | 4 |
| 57 | NJ600-00008 | Quick Coupling (Circumscribed) | 6 |
| 58 | 9101-08055-DX8.8 | Hex Bolt M8x55 | 2 |
| 59 | 9201-16000-DX | Hex Nut M16 | 4 |
| 60 | NJ600-00011 | Big Press Plate | 3 |
| 61 | 9701-06000 | Oil Cup M6 | 1 |
| 62 | NJ600-00015 | Slotted Nylon Plate | 1 |
| 63 | NJ600-18000 | Outer guide rail assembly | 1 |
| 64 | 9101-08025-DX8.8 | Hex Bolt M8x25 | 1 |
| 65 | NJ600-00016 | Support Plate | 1 |

Parts Drawing & Parts List for Saw Blade



Parts Drawing & Parts List for Saw Blade

| Ref# | Drawing No. | Description | Qty |
|------|-------------------|-----------------------------|-----|
| 1 | 6304 | Deep Groove Ball Bearing | 2 |
| 2 | 9103-12030-DX8.8 | Screw M12x30 | 10 |
| 3 | 9101-12100-DX8.8Q | Hex Bolt M12x100 | 2 |
| 4 | 9301-12000-DX | Flat Washer Ø12 | 7 |
| 5 | NJ600-05600 | Saw Blade Protection Frame | 1 |
| 6 | NJ600-05008 | Hydraulic Motor | 1 |
| 7 | NJ600-05003 | Saw Blade Installed Shaft 2 | 1 |
| 8 | NJ600-05900 | Protective Cover | 1 |
| 9 | NJ600-05001 | Saw Blade Installed Shaft | 1 |
| 10 | NJ600-05013 | Steel Cable Baffle Ring | 3 |
| 11 | 6206 | Deep Groove Ball Bearing | 6 |
| 12 | NJ600-05002 | Saw Blade Mounting Plate | 3 |
| 13 | NJ600-05012 | Saw Blade | 3 |
| 14 | 9103-08040-DX8.8 | Screw M8x40 | 18 |
| 15 | NJ600-05005 | Brake Pad | 3 |
| 16 | 9306-08000-DX | Lock Washer Ø8 | 8 |
| 17 | 9104-08020-DX | Screw M8x20 | 6 |
| 18 | 9301-08000-DX | Flat Washer Ø8 | 24 |
| 19 | 9206-08000-DX | Nylon Lock Nut M8 | 18 |
| 20 | NJ600-05004 | Saw Blade Installed Shaft 3 | 1 |
| 21 | NJ600-05007 | Attachment Joint | 1 |
| 22 | 9105-08035-DX | Screw M8x35 | 4 |
| 23 | LST37-00002 | Bolt Connector M20x1.5 | 2 |
| 24 | 9902-2000 | Bonded Washer | 4 |
| 25 | NJ600-05800 | Slider | 1 |
| 26 | 9206-12000-DX | Nylon Lock Nut M12 | 7 |
| 27 | NJ600-05100 | Saw Blade Stand | 1 |
| 28 | NJ600-05500 | Support Leg | 1 |
| 29 | 9101-12080-DX8.8 | Hex Bolt M12x80 | 1 |
| 30 | NJ600-05010 | Adjustable Plate | 1 |
| 31 | 9103-12040-DX8.8 | Screw M12x40 | 2 |
| 32 | 9308-52000-FH | Circlip for Hole | 2 |
| 33 | NJ600-05007 | Bushing | 1 |
| 34 | NJ600-05200 | Pulley Assembly A | 2 |
| 35 | 9101-08016-DX8.8 | Hex Bolt M8x16 | 2 |

Parts Drawing & Parts List for Saw Blade

| Ref# | Drawing No. | Description | Qty |
|------|------------------|---------------------------------|-----|
| 36 | NJ600-05400 | Pulley Assembly C | 1 |
| 37 | 9103-08025-DX8.8 | Screw M8x25 | 1 |
| 38 | NJ600-25000 | Belt Cover | 1 |
| 39 | 9301-06000-DX | Flat Washer $\varnothing 6$ | 11 |
| 40 | 9104-06016-DX | Screw M6x16 | 11 |
| 41 | NJ600-05015-DX | Thick Washer $\varnothing 12$ | 3 |
| 42 | NJ600-05300 | Pulley Assembly B | 1 |
| 43 | SPA2182 | Triangular Belt | 2 |
| 44 | 9302-08000-DX | Big Flat Washer $\varnothing 8$ | 2 |
| 45 | NJ600-05009 | Tension Pulley | 2 |
| 46 | NJ600-05006 | Bushing A | 2 |
| 47 | GB1096 | Flat Key 8x7x25 | 6 |
| 48 | 9306-06000-DX | Lock Washer $\varnothing 6$ | 11 |
| 49 | NJ600-05014-DX | Thick Washer $\varnothing 8$ | 1 |