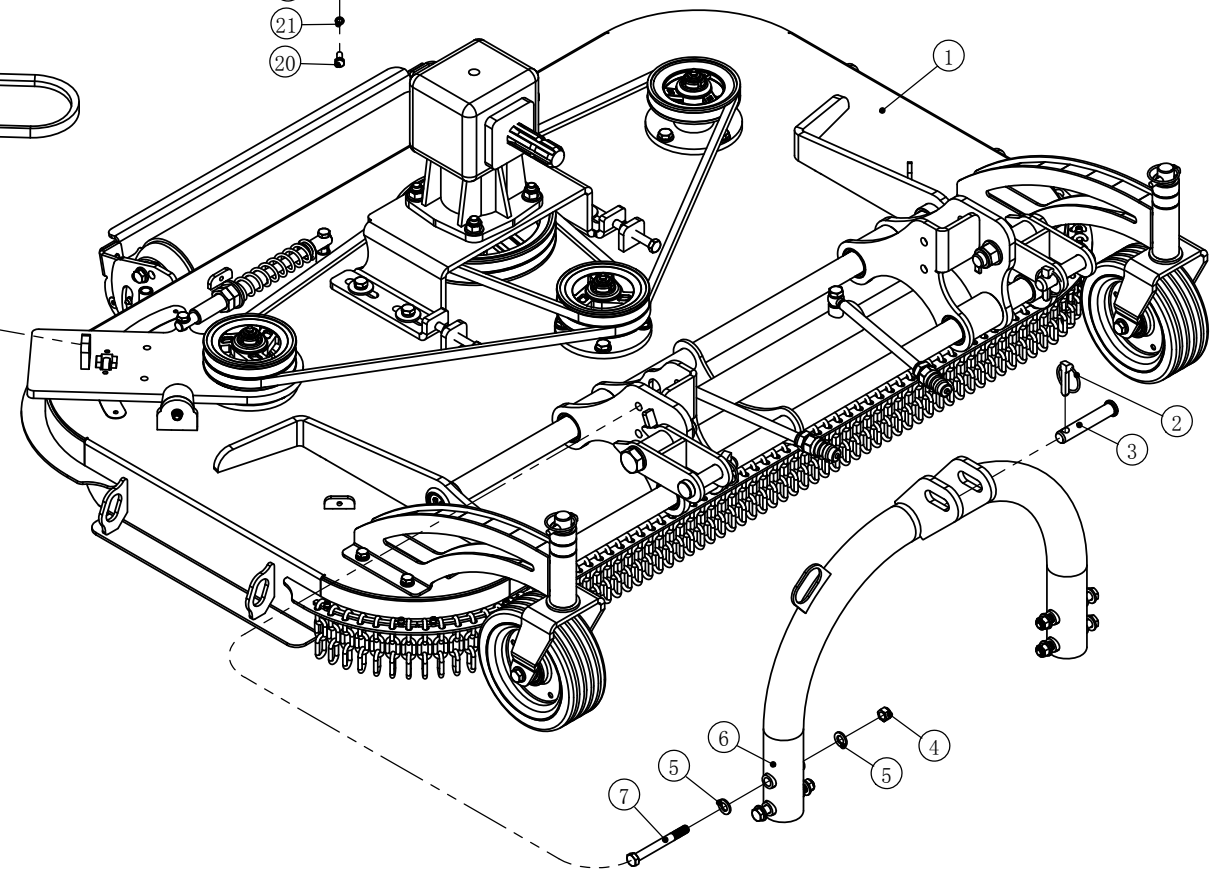
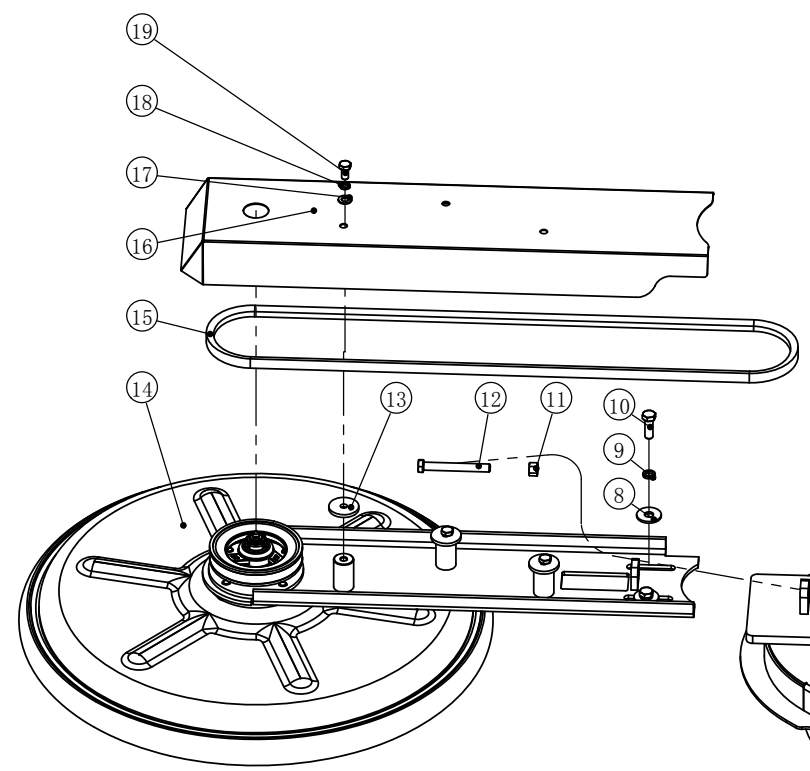
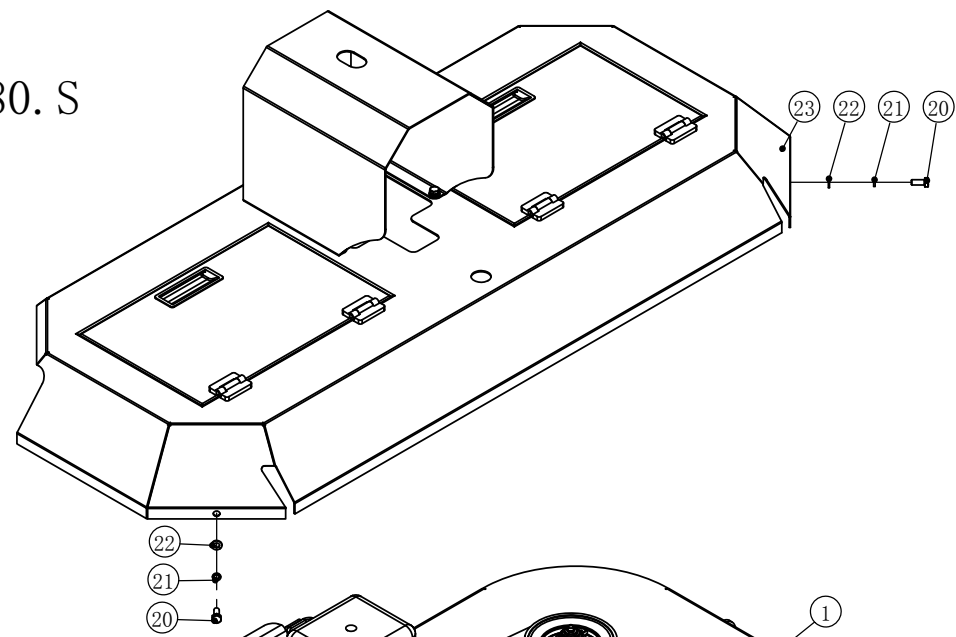


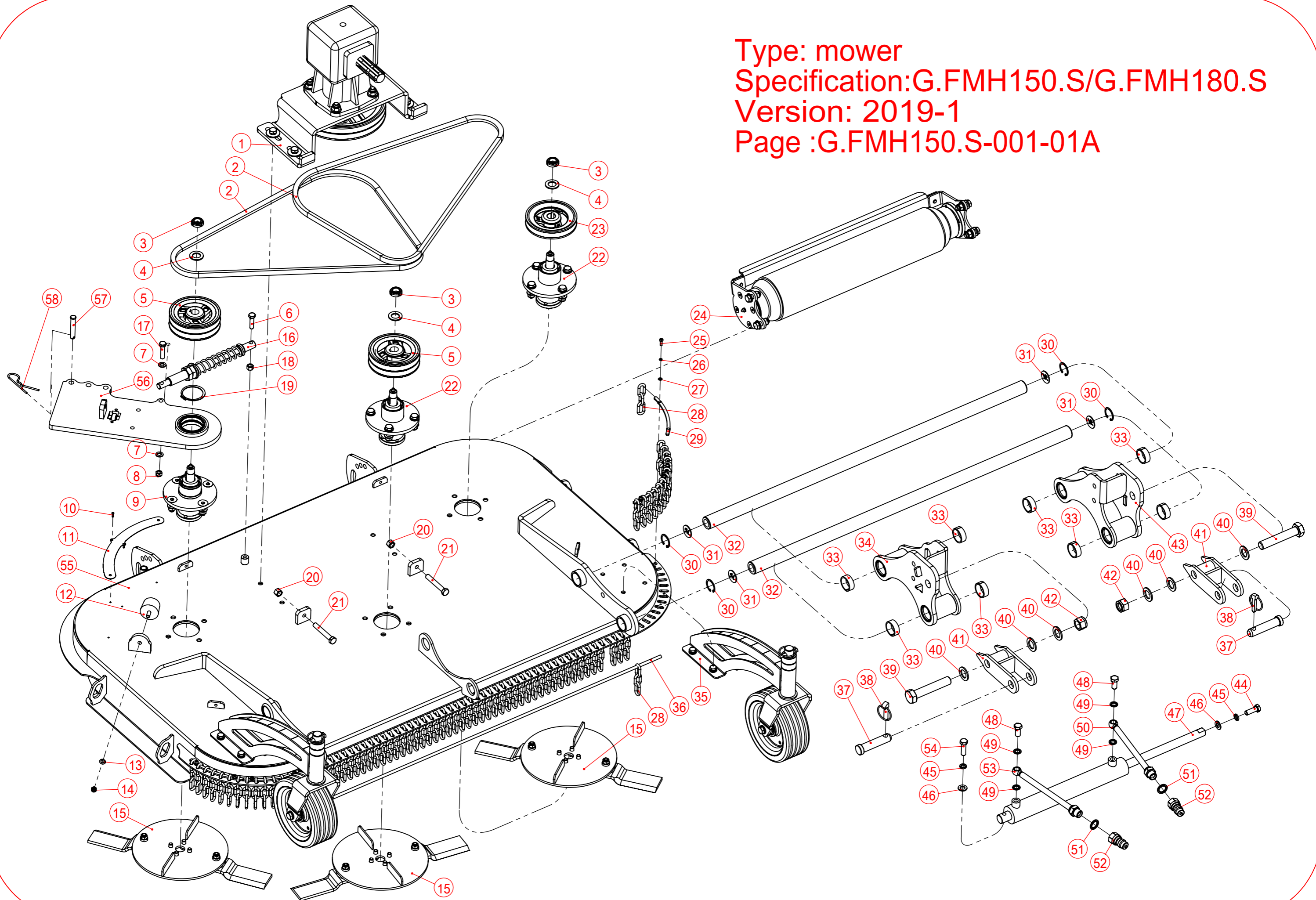
Type: mower
Specification: G. FMH150. S/G. FMH180. S
Version: 2019-1
Page: G. FMH150. S-001A



G.FMH150.S-001A Assembly Explosion Details

NO.	Code	Specification	Name	Qty	Remark
1	2090001528	G.FMH150.S-001-01	Exploded Drawing Of Shell	1	G.FMH150.S
	2090001539	G.FMH180.S-001-01	Exploded Drawing Of Shell	1	G.FMH180.S
2	3120400007	11*45	Lockpin-Colored Zinc	1	
3	3120500009	EF175-119	Upper Suspension Pin	1	
4	3050500007	GB/T 889.1-2000	Locknut M12	4	
5	3080100007	GB/T 95-2002	Flat Gasket 12×2.5	8	
6	2020000701	G.US145H-015	Suspension welded Joint	1	
7	3040300035	GB/T 5782-2000	Half-Threaded Hexagonal BoltM12×110	4	
8	3080200010	GB/T 96.2-2002	Large Gasket 12×3	2	
9	3080500009	GB/T 93-1987	Spring Washer 12	2	
10	3040100069	GB/T 5783-2000	Full Thread Of Hexagonal Head Bolt M12×35	2	
11	3050100007	GB/T 41-2000	Hexagon NutM12	1	
12	3040100082	GB/T 5783-2000	Full Thread Of Hexagonal Head Bolt M12×100	1	
13	2000000125	BCRI200-108	Fixed Shim	3	
14	2090001531	G.FMH150.S-001-03A	Floating Disc Exploded Drawing	1	G.FMH150.S
	2090001541	G.FMH180.S-001-03	Floating Disc Exploded Drawing	1	G.FMH180.S
15	3160300002	GATES Toothed Belt	SPB-1900	1	G.FMH150.S
	3160300004	GATES Toothed Belt	SPB-2000	1	G.FMH180.S
16	2000000961	G.FMH150.S-126	Belt Wheel Cover	1	G.FMH150.S
	2000000962	G.FMH180.S-126	Belt Wheel Cover	1	G.FMH180.S
17	3080100006	GB/T 95-2002	Flat Gasket 10×2	3	
18	3080500008	GB/T 93-1987	Spring Washer 10	3	
19	3040100041	GB/T 5783-2000	Full Thread Of Hexagonal Head Bolt M10×20	3	
20	3040100022	GB/T 5783-2000	Full Thread Of Hexagonal Head Bolt M8×20	4	
21	3080500007	GB/T 93-1987	Spring Washer 8	4	
22	3080100004	GB/T 95-2002	Flat Gasket 8×1.6	4	
23	2090000493	G.FMH150.S-001-02	Access panel Exploded Drawing	1	G.FMH150.S
	2090000494	G.FMH180.S-001-02	Access panel Exploded Drawing	1	G.FMH180.S

Type: mower
Specification: G.FMH150.S/G.FMH180.S
Version: 2019-1
Page :G.FMH150.S-001-01A



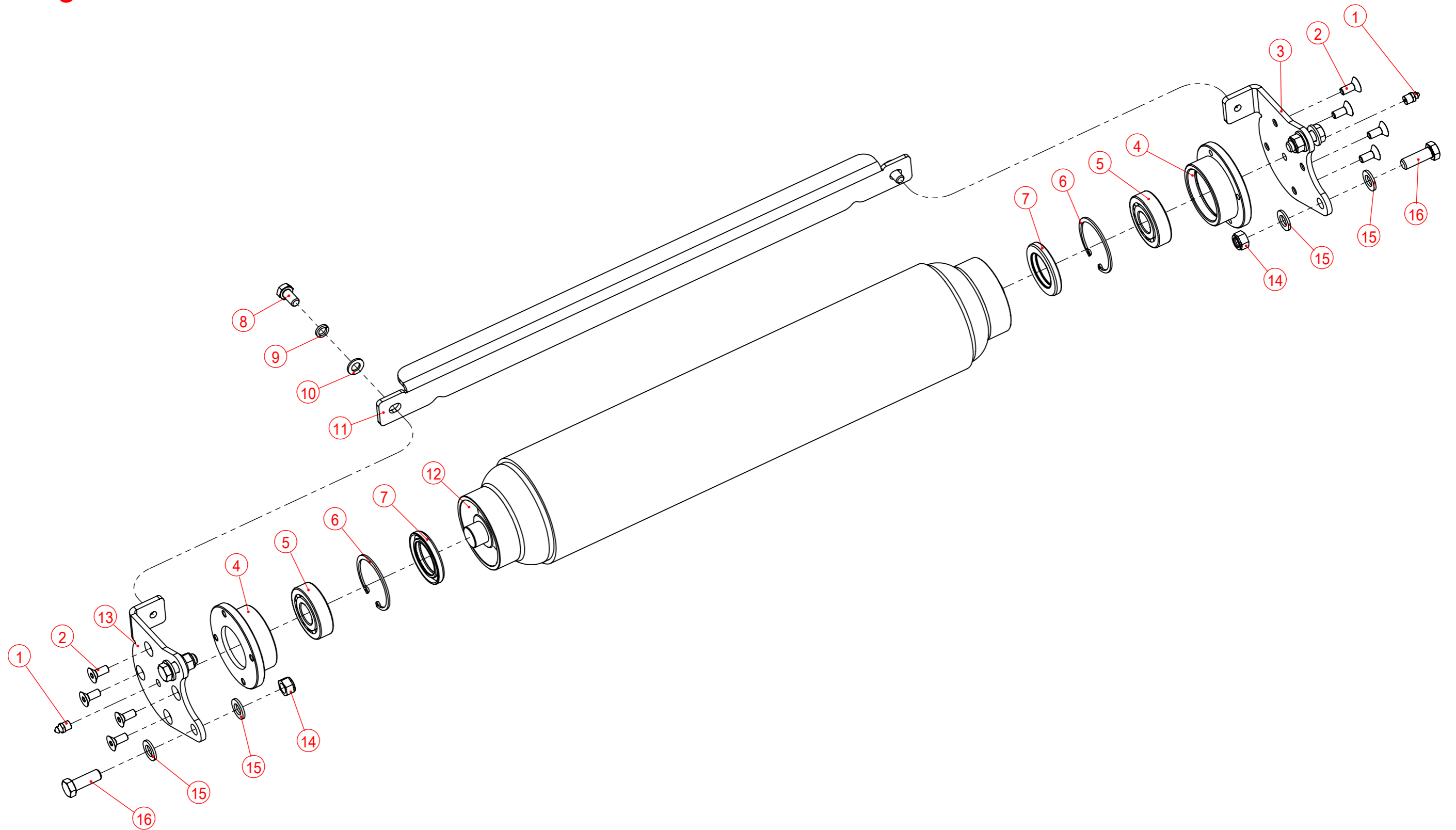
G.FMH150.S-001-01A Shell Exploded Drawing

No.	Code	Specification	Name	Qty	Remark
1	2090000503	G.FMH150.S-001-01-05	Gear Box Assembling	1	
2	3160300001	GATES Toothed Belt	SPB-1800	2	G.FMH150.S
	3160300003	GATES Toothed Belt	SPB-1965	2	G.FMH180.S
3	3051000005	OW-GUK28-White Zinc	Round Locking Nut M20×1.5	3	
4	3080100011	GB/T 95-2002	Flat Gasket 20×3	3	
5	3160400004	G.FMH150.S-114	Pulley 2	2	
6	3040100047	GB/T 5783-2000	Full Thread Of Hexagonal Head Bolt 10×40	1	
7	3080100006	GB/T 95-2002	Flat Gasket 10×2	2	
8	3050500004	GB/T 889.1-2000	Locknut M10	1	
9	2090000502	G.FMH150.S-001-01-04	Assembly Of Joint Bearing Block	1	
10	3070100001	GBT12618.2-2006	Open End Blind Rivet(Flat Round Head) 3×10	4	
11	2000000592	G.FMH150.S-119	Raceway Plate	1	
12	3210200005	BH7-121	Buffer Block	1	
13	3080100004	GB/T 95-2002	Flat Gasket 8×1.6	1	
14	3050500003	GB/T 889.1-2000	LockNut M8	1	
15	2090000499	G.FMH150.S-001-01-02	Blade mount assembly	3	G.FMH150.S
	2090000500	G.FMH180.S-001-01-02	Blade mount assembly	3	G.FMH180.S
16	2090001600	G.FMH150.S-001-01-08	Sliding Rod Assembly	1	
17	3040100048	GB/T 5783-2000	Full Thread Of Hexagonal Head Bolt M10×45	1	
18	3050100005	GB/T 41-2000	Hexagon Nut M10	1	
19	3080700034	GB 894.1-86	Circlip Type A 60	1	
20	3050100007	GB/T 41-2000	Hexagon Nut M12	2	
21	3040100079	GB/T 5783-2000	Full Thread Of Hexagonal Head Bolt M12×80	2	
22	2090000501	G.FMH150.S-001-01-03	Bearing seat assembly	2	
23	3160400003	G.FMH150.S-109	Pully	1	
24	2090000497	G.FMH150.S-001-01-01	Roller Assembly	1	G.FMH150.S
	2090000498	G.FMH180.S-001-01-01	Roller Assembly	1	G.FMH180.S
25	3060100004	GB/T 70.1-2000	SHCS M5×16	8	

26	3080500005	GB/T 93-1987	Spring Washer 5	8	
27	3080100002	GB/T 95-2002	Flat Gasket 5×1	8	
28	3130100014	G.FMH150.S-113	Galvanized Chain 6*20*28 (3 loops)	78	G.FMH150.S
	3130100014	G.FMH150.S-113	Galvanized Chain 6*20*28 (3loops)	90	G.FMH180.S
29	2000000590	G.FMH150.S-108	Chain mounting bracket	4	
30	3080600023	GB 893.1-86	Circlip Type A 35	4	
31	2000000352	G.US145H-101	End Cover	4	
32	3230100009	G.US145H-102	Guide Rail	2	
33	3101100001	36x3x15	POM Guide Ring 36x3x15	8	
34	2020001197	G.FMH150.S-012	Guide rail bracket weldment-L	1	
35	2090000504	G.FMH150.S-001-01-06	Wheel assembly	2	
36	2010000438	G.FMH150.S-111	Chain pin	1	G.FMH150.S
	2010000439	G.FMH180.S-111	Chain pin	1	G.FMH180.S
37	2010000437	G.FMH150.S-110	Hitch pin - lower	2	
38	3120400007	11*45	Lock Pin-Colored Zinc	2	
39	3040300084	GB/T 5782-2000	Half-Threaded Hexagonal Bolt M22×120	2	
40	3080100012	GB/T 95-2002	Flat Gasket 22×3	6	
41	2020001201	G.FMH150.S-017	Lower hitch bracket weldment	2	
42	3050500012	GB/T 889.1-2000	Locknut M22	2	
43	2020001198	G.FMH150.S-013	Guide rail bracket weldment-R	1	
44	3040100069	GB/T 5783-2000	Full Thread Of Hexagonal Head Bolt M12×35	1	
45	3080500009	GB/T 93-1987	Spring Washer 12	2	
46	3080100007	GB/T 95-2002	Flat Gasket 12×2.5	2	
47	3181300037	G.US145H.103	Cylinder Assembly(Grey)	1	
48	3180300009	G1 / 4	Hollow Bolt	2	
49	3170300001	BS/A13.70(G1/4)	Combined sealing gaskets (Automatic core)	4	
50	3180200149	G1 / 2X14英管外螺纹60°内锥面-G1 / 4X19英制铰接体-1900-1T08	Hydraulic Hose	1	
51	3170300006	BS/A21.50(G1/2)	Combined sealing gaskets (Automatic core)	2	
52	3180500001	G1 / 2	Quick Change Connector (公)	2	

53	3180200039	G1 / 2X14英管外螺纹60°内锥面- G1 / 4X19英制铰接体-1500-1T08	Hydraulic Hose	1	
54	3040100071	GB/T 5783-2000	Full Thread Of Hexagonal Head Bolt M12×40	1	
55	2020001938	G.FMH150.S-011A	Shell Weldment	1	G.FMH150.S
	2020001196	G.FMH180.S-011	Shell Weldment	1	G.FMH180.S
56	2090001530	G.FMH150.S-001-01-07A	Swing Arm Plate Assembly	1	
57	3120200015	GB 882-88	Pin Shaft Type B	1	
58	3120400008	3.5	R Pin-Colored Zinc	1	

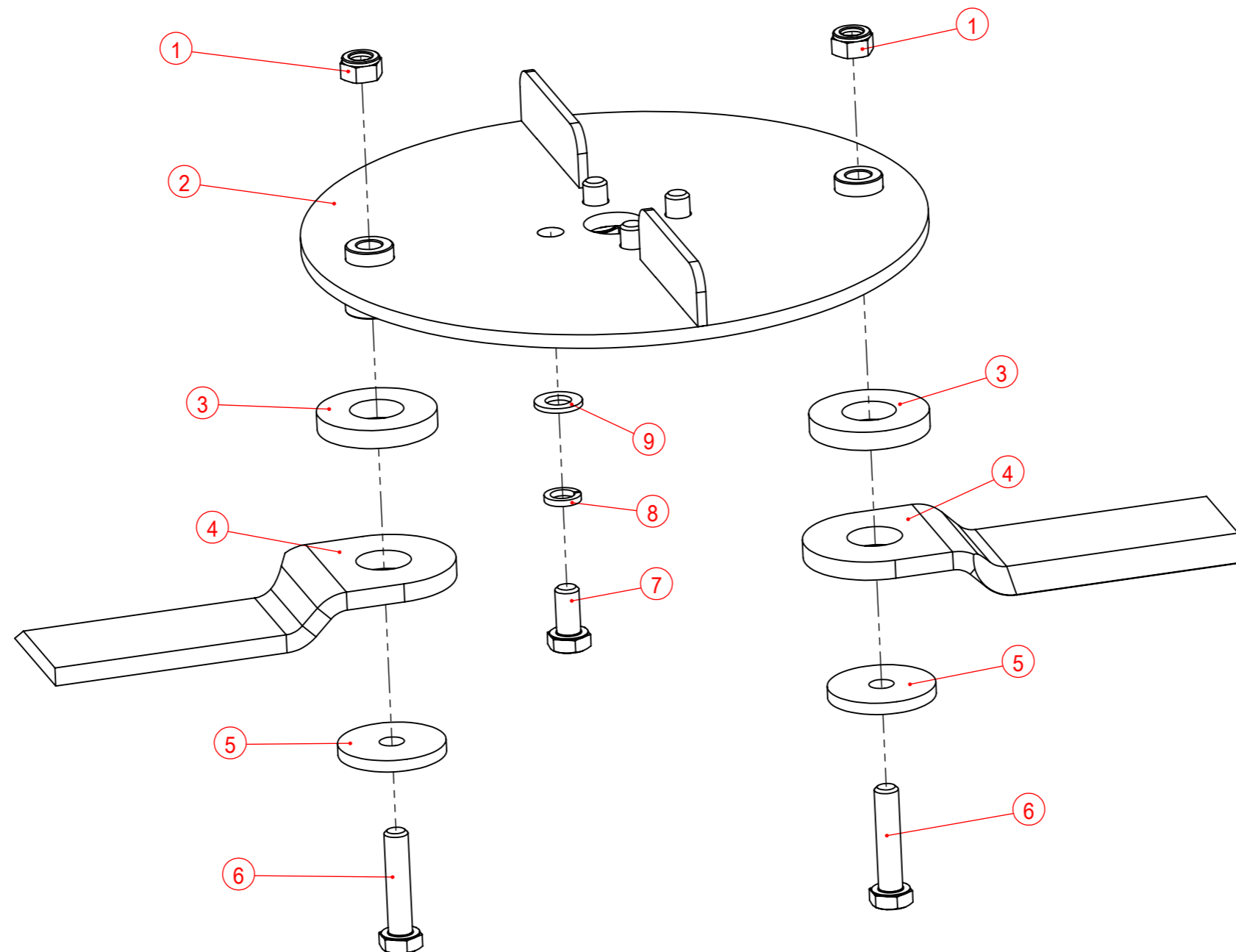
Type: mower
Specification: G.FMH150.S/G.FMH180.S
Version: 2019-1
Page :G.FMH150.S-001-01-01



G.FMH150.S-001-01-01 Roller Assembly

No.	Code	Specification	Name	Qty	Remark
1	3170400005	G1/8	Grease Nipple	2	
2	3060200018	GB/T 70.3-2000	HSCHS M8×20	8	
3	2000000587	G.FMH150.S-103	Roller Junction Plate A	1	
4	3150100006	R.OS/M165-OS-113	Roller Bearing seat	2	
5	3100200007	GB/T 281-94	Aligning ball bearing 1305	2	
6	3080600038	GB 893.1-86	Circlip Type A 62	2	
7	3170100018	GB/T 13871.1-2007	TC oil seal 40X62X8	2	
8	3040100041	GB/T 5783-2000	Full Thread Of Hexagonal Head Bolt M10×20	2	
9	3080500008	GB/T 93-1987	Spring Washer 10	2	
10	3080100006	GB/T 95-2002	Flat Gasket 10×2	2	
11	2000000593	G.FMH150.S-121	Mud Scraper Plate	1	G.FMH150.S
	2000000594	G.FMH180.S-121	Mud Scraper Plate	1	G.FMH180.S
12	2020001213	G.FMH150.S-021	Roller weldment	1	G.FMH150.S
	2020001214	G.FMH180.S-021	Roller weldment	1	G.FMH180.S
13	2000000595	G.FMH150.S-122	Roller Junction Plate B	1	
14	3050500007	GB/T 889.1-2000	Locknut M12	4	
15	3080100007	GB/T 95-2002	Flat Gasket 12×2.5	8	
16	3040100069	GB/T 5783-2000	Full Thread Of Hexagonal Head Bolt M12×35	4	

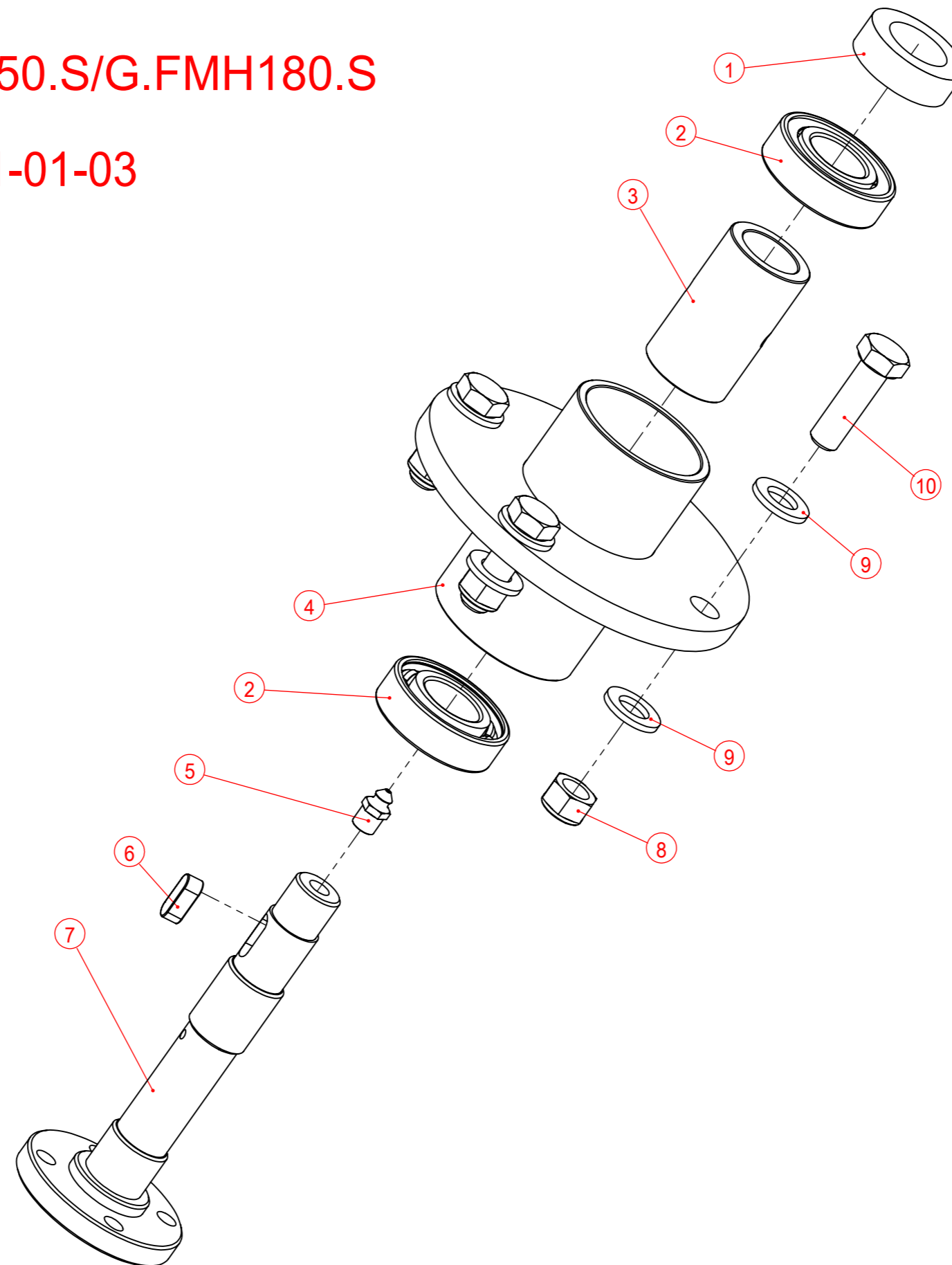
Type:mower
Specification:G.FMH150.S/G.FMH180.S
Version:2019-1
Page:G.FMH150.S-001-01-02



G.FMH150.S-001-01-02 Blade flywheel Assembly

No.	Code	Specification	Name	Qty	Remark
1	3050500004	GB/T 889.1-2000	Locknut M10	2	
2	2020001202	G.FMH150.S-018	Blade flywheel weldment	1	G.FMH150.S
	2020001203	G.FMH180.S-018	Blade flywheel weldment	1	G.FMH180.S
3	2000000591	G.FMH150.S-118	Pulley sleeve	2	
4	3220100033	G.FMH150.S-106	blade	2	
5	2000000125	BCRI200-108	Fixed Shim	2	
6	3040100048	GB/T 5783-2000	Full Thread Of Hexagonal Head Bolt M10×45	2	
7	3040100041	GB/T 5783-2000	Full Thread Of Hexagonal Head Bolt M10×20	4	
8	3080500008	GB/T 93-1987	Spring washer10	4	
9	3080100006	GB/T 95-2002	Flat Gasket 10×2	4	

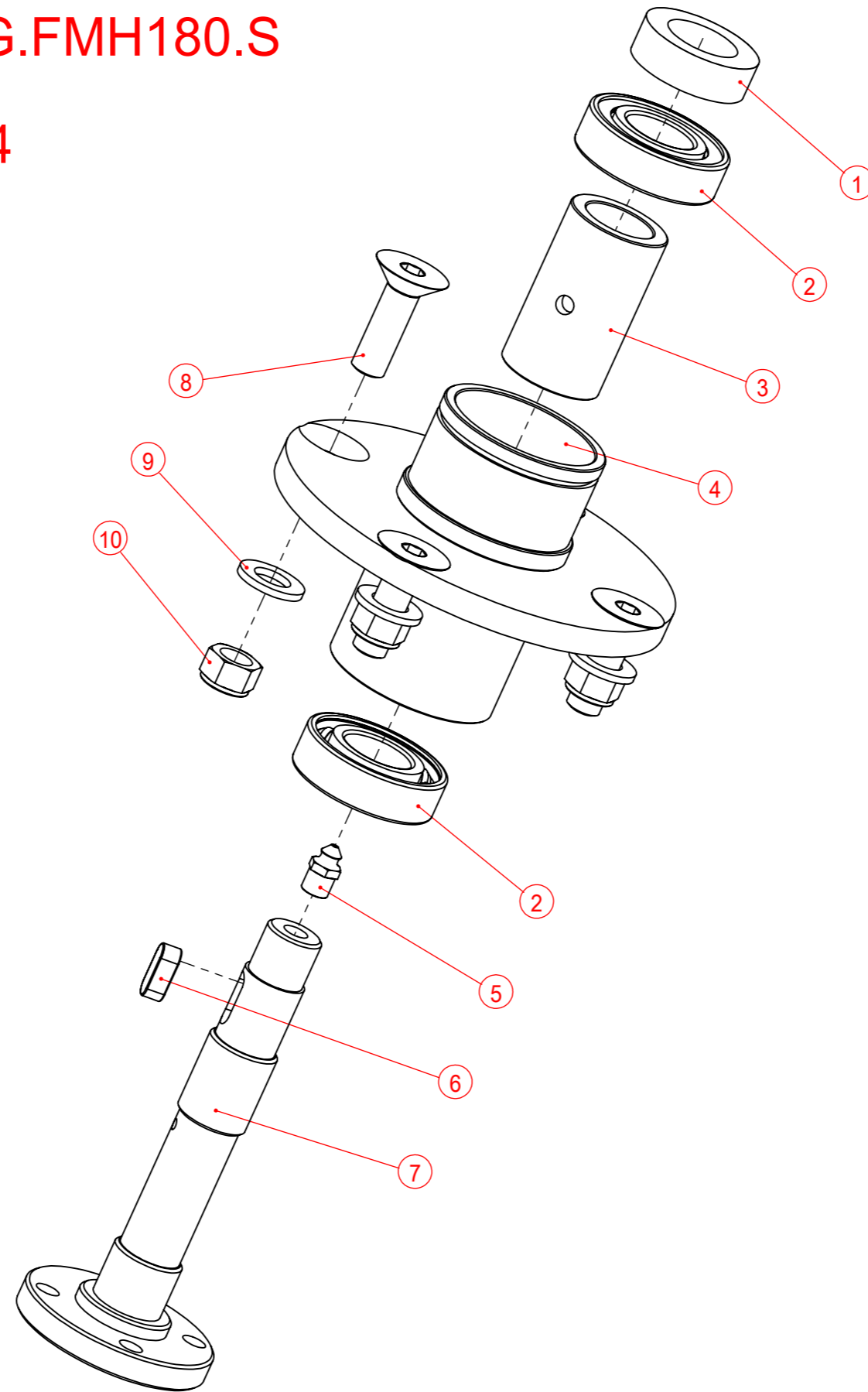
Type:mower
Specification:G.FMH150.S/G.FMH180.S
Version:2019-1
Page:G.FMH150.S-001-01-03



G.FMH150.S-001-01-03 Bearing Seat Assembly

No.	Code	Specification	Name	Qty	Remar
1	2010000436	G.FMH150.S-117	Trolley shaft	1	
2	3100100078	GB/T 276-94	Deep groove ball bearing 6205-RZ	2	
3	2010000435	G.FMH150.S-102	Sleeve	1	
4	2020000201	G.FMH150.S-016	Bearing Seat Weldment	1	
5	3170400005	G1/8	Grease Nipple	1	
6	3090100004	GB / T1096-2003	Common Flat Key Type A 8×20	1	
7	3150200028	G.FMH150.S-107	Blade Shaft	1	
8	3050500007	GB/T 889.1-2000	LockNut M12	4	
9	3080100007	GB/T 95-2002	Flat Gasket 12×2.5	8	
10	3040100071	GB/T 5783-2000	Full Thread Of Hexagonal Head Bolt M12×40	4	

Type:mower
Specification:G.FMH150.S/G.FMH180.S
Version:2019-1
Page:G.FMH150.S-001-01-04



G.FMH150.S-001-01-04 Joint bearing seat Assembly

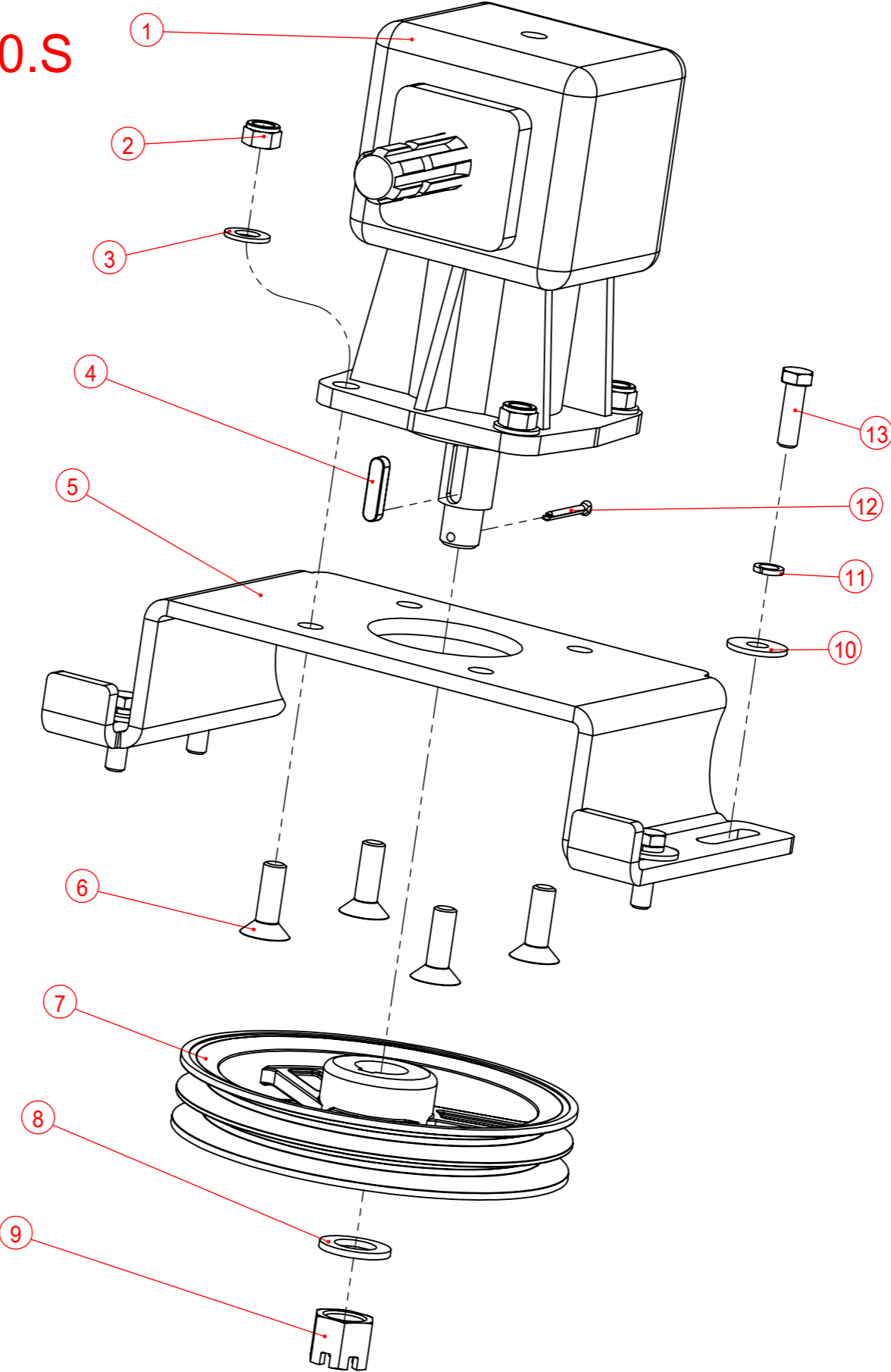
No.	Code	Specification	Name	Qty	Remark
1	2010000436	G.FMH150.S-117	Trolley Shaft	1	
2	3100100078	GB/T 276-94	Deep Groove Ball Bearing 6205-RZ	2	
3	2010000435	G.FMH150.S-102	Sleeve	1	
4	2020001219	G.FMH150.S-024	Joint bearing seat weldment	1	
5	3170400005	G1/8	Grease Nipple	1	
6	3090100004	GB / T1096-2003	Common Flat Key Type A 8×20	1	
7	3150200028	G.FMH150.S-107	Blade Shaft	1	
8	3060200050	GB/T 70.3-2000	HSCHS M12×40	4	
9	3080100007	GB/T 95-2002	Flat Gasket 12×2.5	4	
10	3050500007	GB/T 889.1-2000	Locknut M12	4	

Type:mower

Specification:G.FMH150.S/G.FMH180.S

Version:2019-1

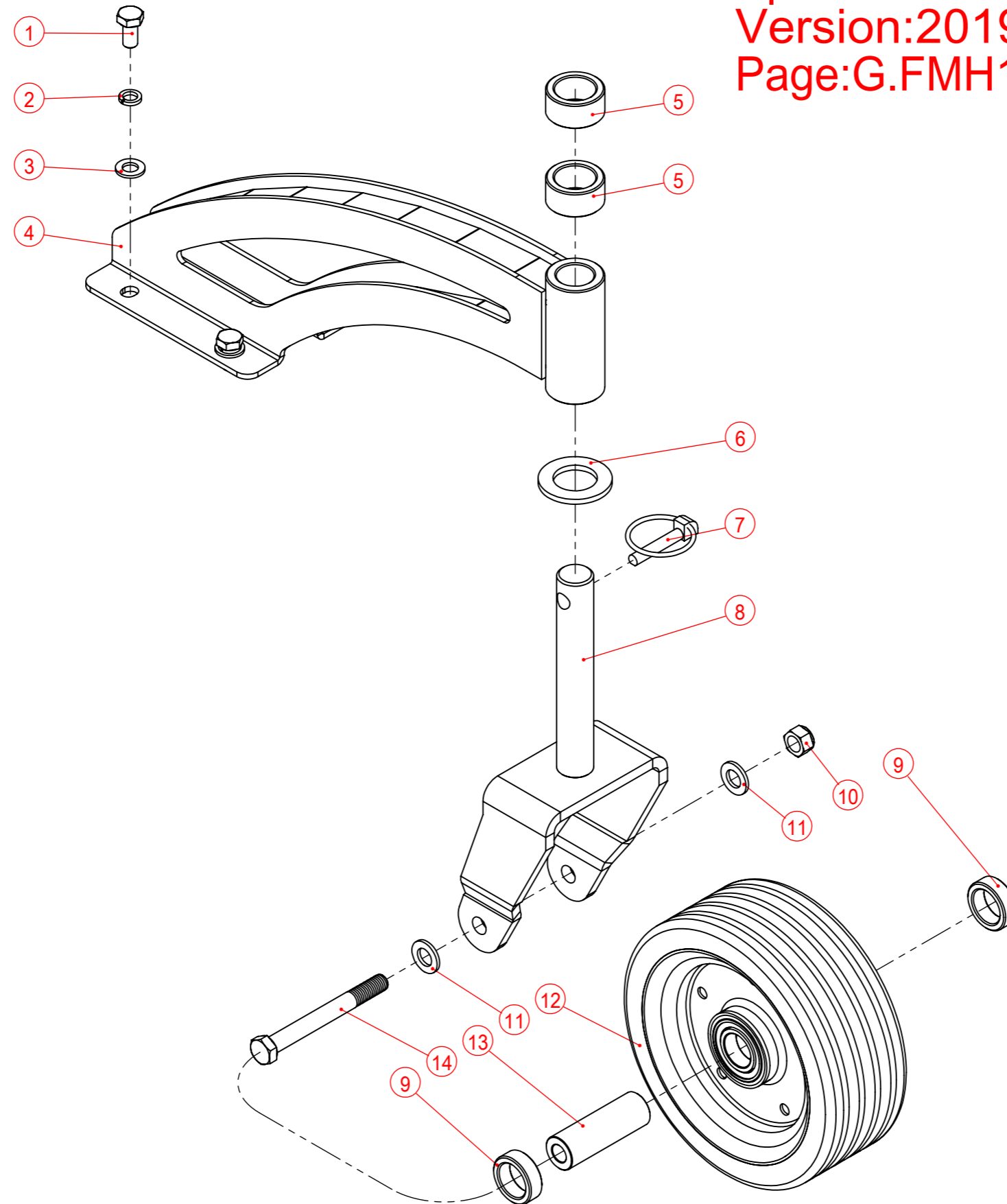
Page:G.FMH150.S-001-01-05



G.FMH150.S-001-01-05 Gear Box Assembly

No.	Code	Specification	Name	Qty	Remark
1	3160100007	XH30.283Z.01L	FM-FMS-30HP JIANGLING Gearbox(BLACK)	1	
2	3050500008	GB/T 889.1-2000	Locknut M14	4	
3	3080100008	GB/T 95-2002	Flat Gasket 14×2.5	4	
4	3090100009	GB / T1096-2003	Common Flat Key Type A 10×40	1	
5	2000000586	G.FMH150.S-101	Gearbox Mounting Bracket	1	
6	3060200063	GB/T 70.3-2000	HSCHS M14×45	4	
7	3160400005	G.FMH150.S-115	Large Pulley	1	
8	3080100013	GB/T 95-2002	Flat Gasket 24×4	1	
9	3050800012	GB/T 9459-1988	Hexagonal Open Slotted Thin Nut Fine ThreadM24×2	1	
10	3080200010	GB/T 96.2-2002	Large Washer 12×3	4	
11	3080500009	GB/T 93-1987	Spring Washer 12	4	
12	3120100107	GB/T 91-2000	Split Pin 5×40	1	
13	3040100071	GB/T 5783-2000	Full Thread Of Hexagonal Head Bolt M12×40	4	

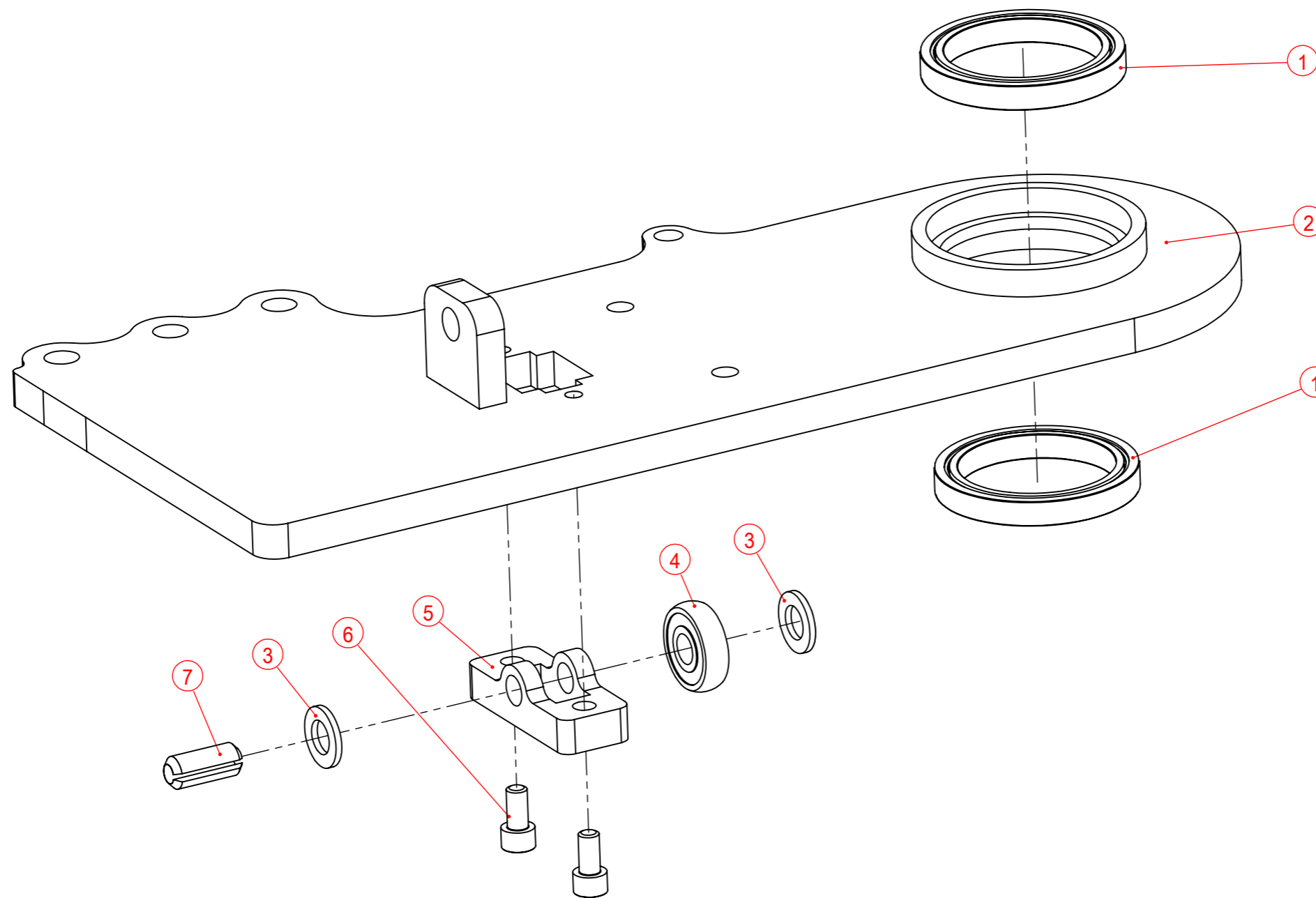
Type:mower
Specification:G.FMH150.S/G.FMH180.S
Version:2019-1
Page:G.FMH150.S-001-01-06



G.FMH150.S-001-01-06 Wheel Fork Assembly

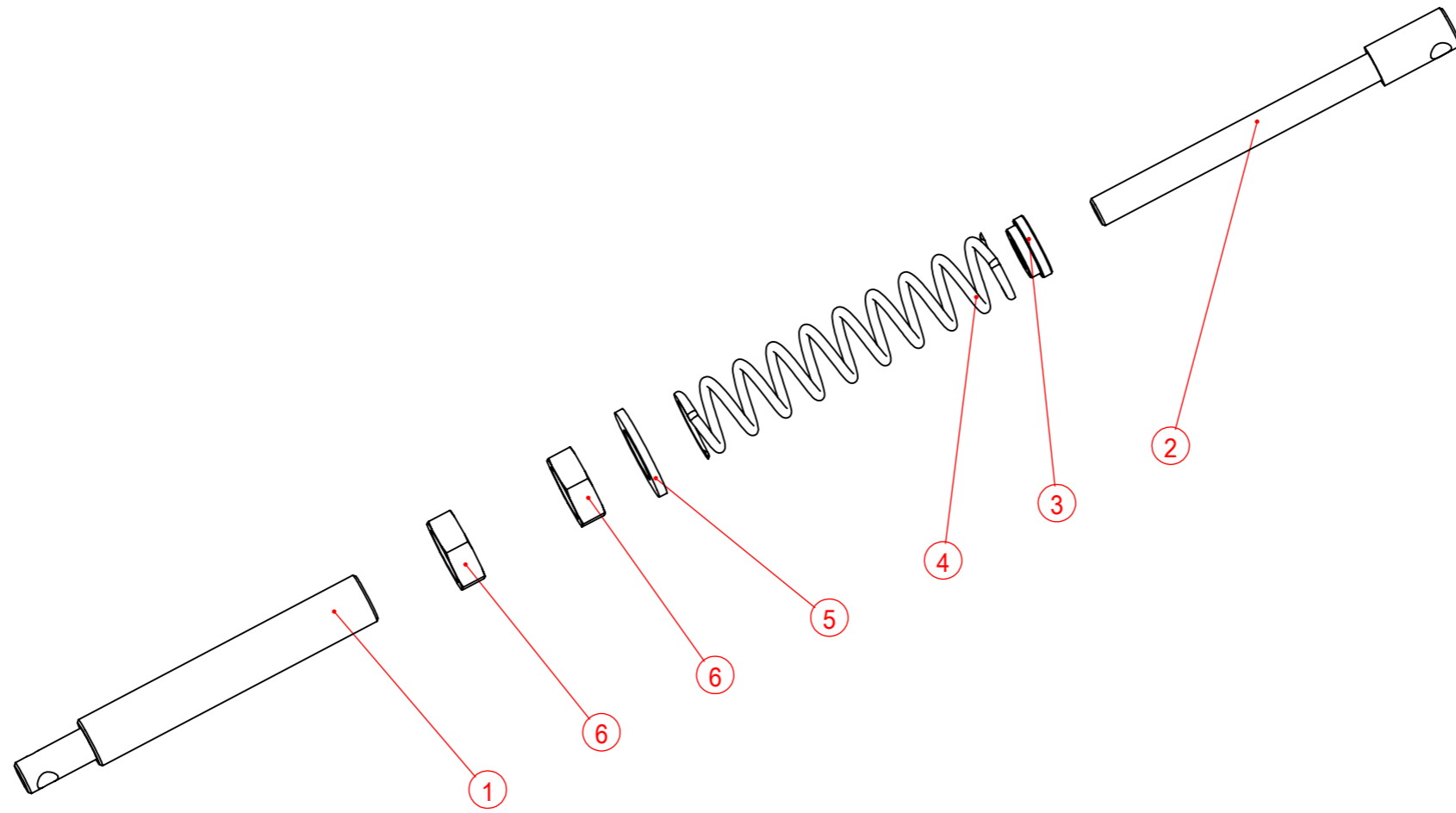
No.	Code	Specification	Name	Qty	Remark
1	3040100041	GB/T 5783-2000	Full Thread Of Hexagonal Head BoltM10×20	4	
2	3080500008	GB/T 93-1987	Spring Washer10	4	
3	3080100006	GB/T 95-2002	Flat Gasket 10×2	4	
4	2020001220	G.FMH150.S-025	Trolley weldment	1	
5	2010000440	G.FMH150.S-120	Adjustment Spacer Sleeve	2	
6	3080100014	GB/T 95-2002	Flat Gasket 27×4	1	
7	3120400009	8	Lockpin-Colored Zinc	1	
8	2020001007	FCH120-015	Wheel Fork Weldment	1	
9	3210500007	FM180.129	Nylon Spacer Sleeve	2	
10	3050500007	GB/T 889.1-2000	LocknutM12	1	
11	3080100007	GB/T 95-2002	Flat Gasket 12×2.5	2	
12	3140200012	FM180.125	8×3 Rubber Powder Solid Wheel (Containing bearing 6005ZZ)	1	
13	2010000115	FM180-128	Axle	1	
14	3040300035	GB/T 5782-2000	Bolt M12×110	1	

Type:mower
Specification:G.FMH150.S/G.FMH180.S
Version:2019-1
Page:G.FMH150.S-001-01-07A



G.FMH150.S-001-01-07A Swing Arm Plate Assembly

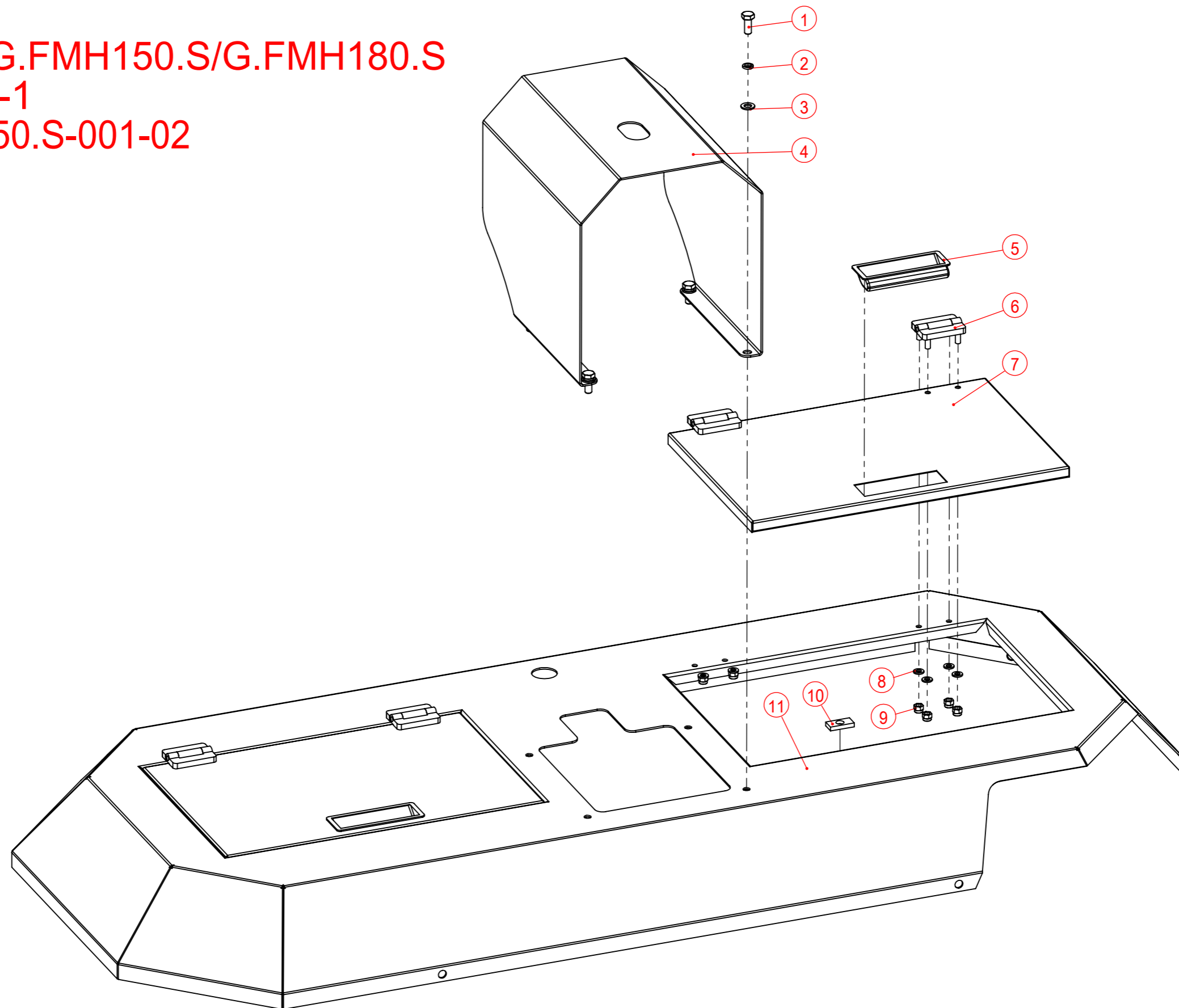
No.	Code	Specification	Name	Qty	Remark
1	3100100060	GB/T 276-94	Deep Groove Ball Bearing 61812-2RZ.	2	
2	2020001937	G.FMH150.S-014A	Swing Arm Bearing Seat Weldment	1	
3	3080100007	GB/T 95-2002	Flat Gasket 12×2.5	2	
4	3100600001	SC201-2RS	Spherical Bearings SC6201-2RS	1	
5	3150100023	G.FMH150.S-116	Bearing Mounting Bracket	1	
6	3060100025	GB/T 70.1-2000	SHCS M8×16	2	
7	3120300037	GB/T 879.1-2000	Spring Pin 12×30	1	



G.FMH150.S-001-01-08 Sliding Rod Assembly

No.	Code	Specification	Name	Qty	Remark
1	2010000698	G.FMH150.S-124	Sliding Sleeve	1	
2	2010000697	G.FMH150.S-123	Sliding Rod	1	
3	2010000699	G.FMH150.S-125	Gasket	1	
4	3110200036	G.FM150.S-126	Pressure Spring	1	
5	3080100013	GB/T 95-2002	Flatr Gasket 24×4	1	
6	3050300010	GB/T 6172.1-2000	Hexagon Thin Nut M24	2	

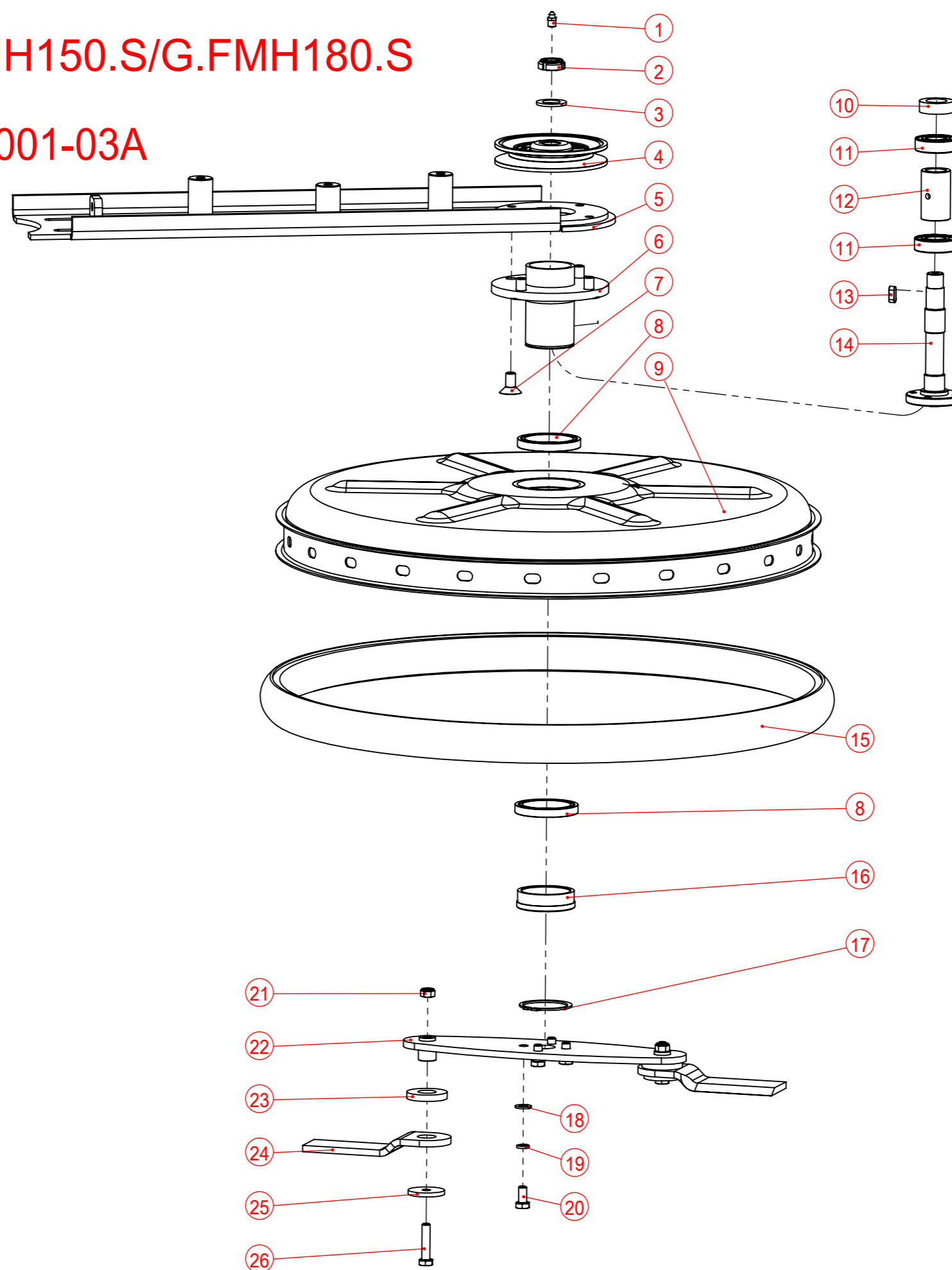
Type:mower
Specification:G.FMH150.S/G.FMH180.S
Version:2019-1
Page:G.FMH150.S-001-02



G.FMH150.S-001-02 Access panel Exploded Drawing

No.	Code	Specification	Name	Qty	Remark
1	3040100022	GB/T 5783-2000	Full Thread Of Hexagonal Head BoltM8×20	4	
2	3080500007	GB/T 93-1987	Spring Washer 8	4	
3	3080100004	GB/T 95-2002	Flat Gasket 8×1.6	4	
4	2000000589	G.FMH150.S-105	PTO Cover	1	
5	3140100001	102x34	Black holder	2	
6	3140500004		Zinc alloy die-casting hinge	4	
7	2000000588	G.FMH150.S-104	Access panel	2	
8	3080100003	GB/T 95-2002	Flat Gasket 6×1.6	16	
9	3050500002	GB/T 889.1-2000	Locknut M6	16	
10	3140300001	30x15x5	Magnet	4	
11	2020001211	G.FMH150.S-020	Cover weldment	1	
	2020001212	G.FMH180.S-020	Cover weldment	1	

Type:mower
Specification:G.FMH150.S/G.FMH180.S
Version:2019-1
Page:G.FMH150.S-001-03A



G.FMH150.S-001-03A Floating Disc Exploded Drawing

No.	Code	Specification	Name	Qty	Remark
1	3170400005	G1/8	Grease nipple	1	
2	3051000005	OW-GUK28-White Zinc	Round locknut M20×1.5	1	
3	3080100011	GB/T 95-2002	Flat Gasket 20×3	1	
4	3160400003	G.FMH150.S-109	Pulley	1	
5	2020001921	G.FMH150.S-022A	Swing Arm Plate Weldment	1	G.FMH150.S
	2020001942	G.FMH180.S-022A	Swing Arm Plate Weldment	1	G.FMH180.S
6	2020001204	G.FMH150.S-019	Inter-row head bearing weldment	1	
7	3060200047	GB/T 70.3-2000	HSCHS M12×25	4	
8	3100100060	GB/T 276-94	Deep groove ball bearing 61812-2RZ.	2	
9	2020001943	G.FMH150.S-015A	Floating Disc Cover Weldment	1	
10	2010000436	G.FMH150.S-117	Trolley shaft	1	
11	3100100078	GB/T 276-94	Deep groove ball bearing 6205-RZ	2	
12	2010000435	G.FMH150.S-102	Sleeve	1	
13	3090100004	GB / T1096-2003	Common Flat key Type A 8×20	1	
14	3150200028	G.FMH150.S-107	Blade Shaft	1	
15	3210500047	UF650-101	Rubber Ring	1	
16	2010101077	G.FMH150.S-026-01	Fixed Sleeve	1	
17	3080700034	GB 894.1-86	Circlip Type A 60	1	
18	3080100006	GB/T 95-2002	Flat Gasket 10×2	4	
19	3080500008	GB/T 93-1987	Spring Washer 10	4	
20	3040100041	GB/T 5783-2000	Full Thread Of Hexagonal Head Bolt M10×20	4	
21	3050500004	GB/T 889.1-2000	Locknut M10	2	
22	2020001222	G.FMH150.S-027	Floating Disc Weldment	1	
23	2000000591	G.FMH150.S-118	Pulley sleeve	2	
24	3220100033	G.FMH150.S-106	Blade	2	
25	2000000125	BCRI200-108	Fixed Shim	2	
26	3040100048	GB/T 5783-2000	Full Thread Of Hexagonal Head Bolt M10×45	2	